

Exploring GC Column Selectivity for Analysis of Aromatic Compounds



Presented By

Ramkumar Dhandapani PhD
Global Product Manager -GC

February 27th , 2020
Phenomenex

Overview

Polycyclic Aromatic Hydrocarbons

- PAH Terminologies & Regulations
- Challenges with PAH Analysis

ZB-PAH-EU

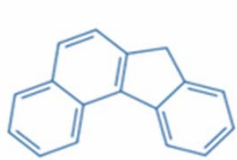
- Complete resolution of EU15+1 and EPA 610 PAHs
- Speed up your PAH Analysis
- PAH in Food
- One Column for PAH & PCB

ZB-PAH-CT

- Unique Selectivity for Chrysene & Triphenylene
- Short Run Time & better Sensitivity
- Phthalates in Food
- EPA-8270 Method Resolution Improvement

Aromatic Contaminants

PAH



Benzo[c]fluorene

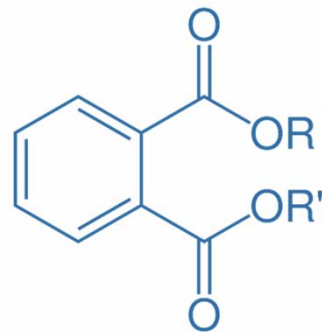


Benz[a]
anthracene

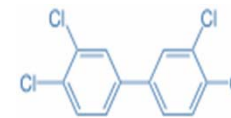


Cyclopenta[cd]pyrene

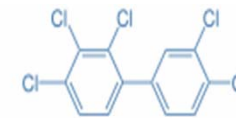
Phthalates



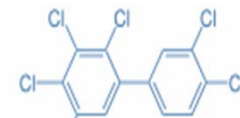
PCB



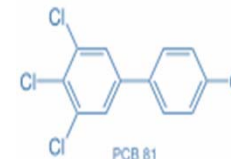
PCB 77



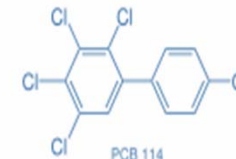
PCB 105



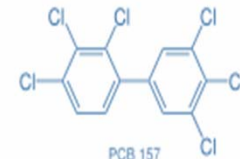
PCB 156



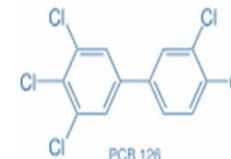
PCB 81



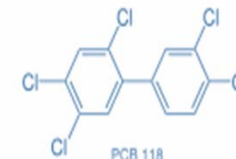
PCB 114



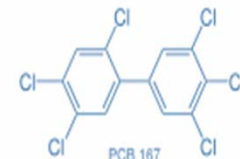
PCB 157



PCB 126



PCB 118



PCB 167

PAH Terminologies

- Polycyclic Aromatic Hydrocarbons
- Polynuclear Aromatic Hydrocarbons
- Poly Aromatic Hydrocarbons
- Polycyclic Organic Hydrocarbons
- Priority Pollutant
- Persistent Organic Pollutant(POPs)
- Poly Chlorinated Biphenyls (PCBs)
- Terphenyl

Regulations

- Environmental Protection Agency: **EPA**
- European Food Safety Authority: **EFSA**
- International Electrotechnical Commission: **IEC**
- AfPS GS 2014:01 pak regulation
- European Chemical Agency **ECHA**
- Health Canada
- EU 15+1

Common Challenges with PAH Testing



Time Intensive Analysis

- Generally 50-60 min run time
- Heavy PAHs have lower sensitivity
- Heavy PAH has inlet discrimination



Resolution of Critical pairs

- PAH isomers are very close in structure & difficult to resolve
- Different regulations require different pair separation



Matrix

- Matrix can have adverse effect on analysis quality
- Food matrix needs higher temperature bakeout
- Ghost peaks can appear from high boiling matrix contamination



Sensitivity

- Heavier PAH may lose sensitivity because of inlet discrimination and low column max temperature



Unleash the power of Fast GC PAH Analysis



Selectivity1: ZB-PAH-EU

- Up to 70% Faster PAH Analysis
- Elevated Temperature Stability 340/360°C

Selectivity2: ZB-PAH-CT

- Enhanced Resolution for Chrysene and Triphenylene
- Increased Benzo[b,k]fluoranthene Separation

Factors Influencing Resolution

Master Resolution Equation

$$R_s = \frac{\sqrt{N}}{4} \cdot \frac{\alpha - 1}{\alpha} \cdot \frac{k}{1 + k}$$

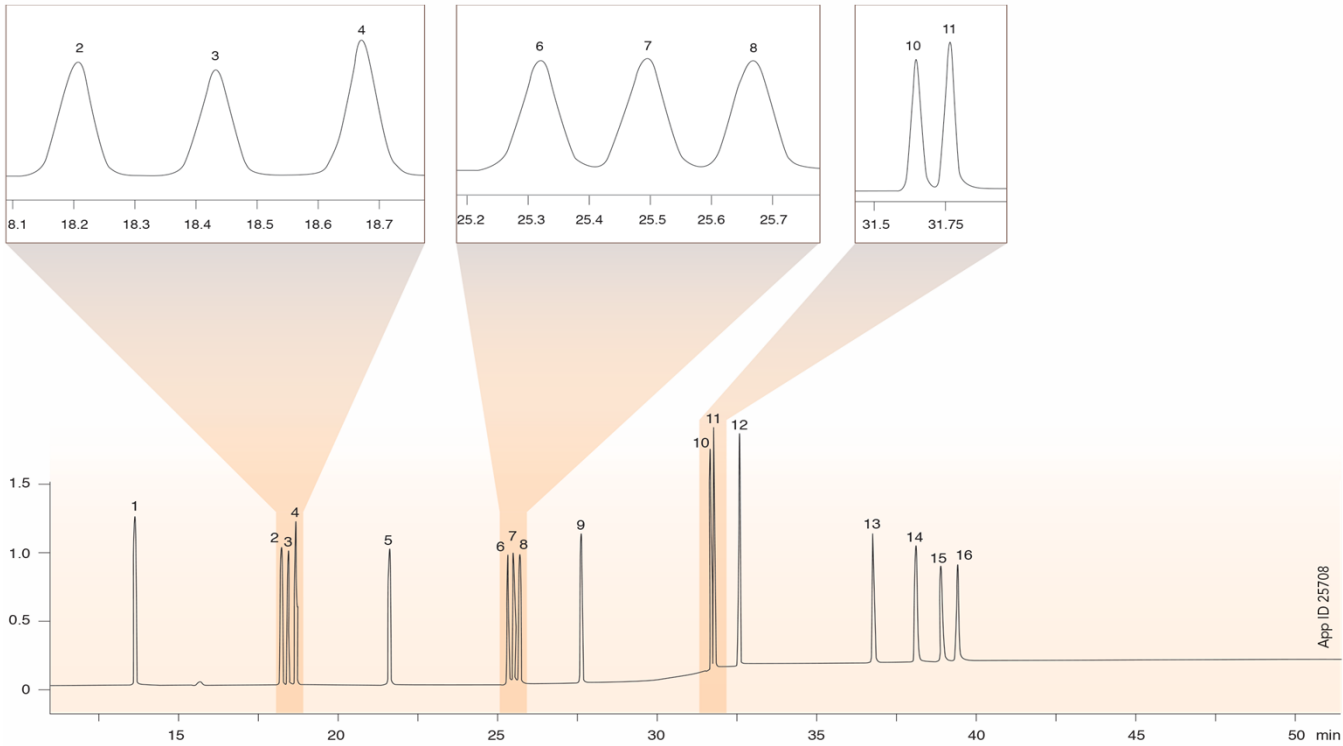
Efficiency Selectivity Retention

N = theoretical plates

α = k_2/k_1

k = $(t_R - t_o)/t_o$

Complete Resolution of EU 15+1 PAH



GC-MS Method Conditions

Column: Zebron ZB-PAH-EU
Dimensions: 30 meter x 0.25 mm x 0.20 μm
Part No.: 7HG-G043-10
Injection: Split 5:1 @ 330 °C, 1 μL
Recommended Liner: Zebron PLUS Single Taper Z- Liner™
Liner Part No.: AG2-4B13-05 (for Shimadzu 2010 GC)
Carrier Gas: Helium @ 24 psi (constant pressure)

Oven Program: 45 °C for 0.8 min to 200 °C @ 45 °C/min to 226 °C @ 3 °C/min for 0 min to 320 °C @ 10 °C/min for 20 min

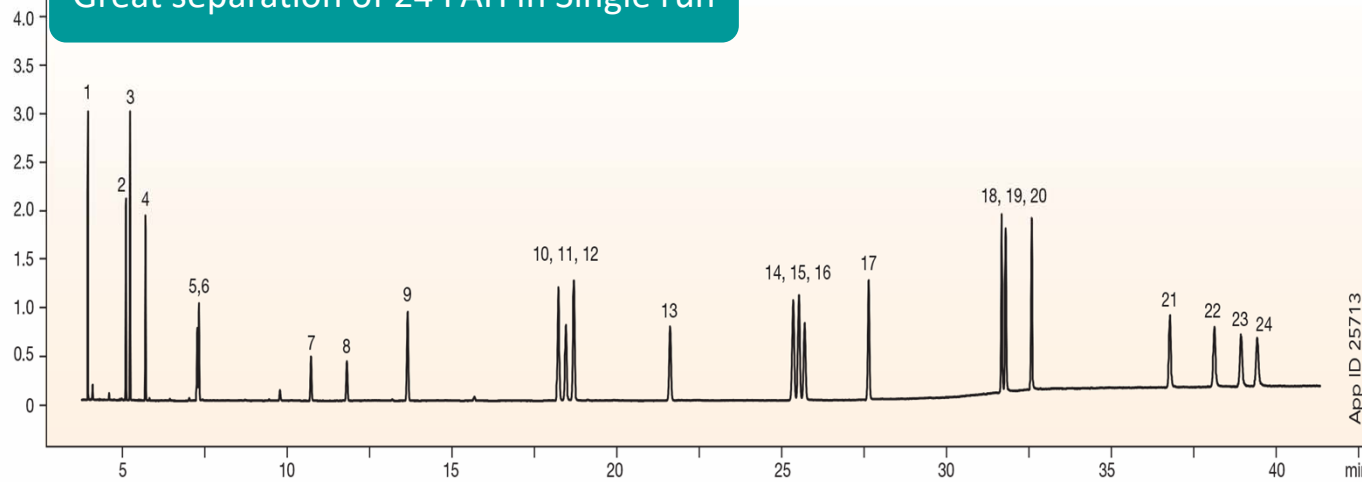
Detector: MSD, 50-500 m/z
Transfer line Temperature: 300 °C
Source Temperature: 300 °C

- Sample:**
- | | |
|--------------------------|----------------------------|
| 1. Benzo[c]fluorene | 9. Benzo[a]pyrene |
| 2. Benz[a]anthracene | 10. Indeno[1,2,3-cd]pyrene |
| 3. Cyclopenta[c,d]pyrene | 11. Dibenzo[a,h]anthracene |
| 4. Chrysene | 12. Benzo[g,h,i]perylene |
| 5. 5-Methylchrysene | 13. Dibenzo[a,l]pyrene |
| 6. Benzo[b]fluoranthene | 14. Dibenzo[a,e]pyrene |
| 7. Benzo[k]fluoranthene | 15. Dibenzo[a,i]pyrene |
| 8. Benzo[j]fluoranthene | 16. Dibenzo[a,lh]pyrene |

App ID: 25708

Complete Resolution of EU (15+1) and EPA 610 PAHs

Great separation of 24 PAH in Single run



GC-MS Method Conditions

Column: Zebron ZB-PAH-EU

Dimensions: 30 meter x 0.25 mm x 0.20 μm

Part No.: 711G-G043-10

Injection: Split 5:1 @ 330 °C, 1 μL

Recommended Liner: Zebron PLUS Single Taper Z- Liner™

Liner Part No.: AG2-4B13-05 (for Shimadzu 2010 GC)

Carrier Gas: Helium @ 24 psi (constant pressure)

Oven Program: 45 °C for 0.8 min to 200 °C @ 45 °C/min to 226 °C @ 3 °C/min for 0 min to 320 °C @ 10 °C/min for 20 min

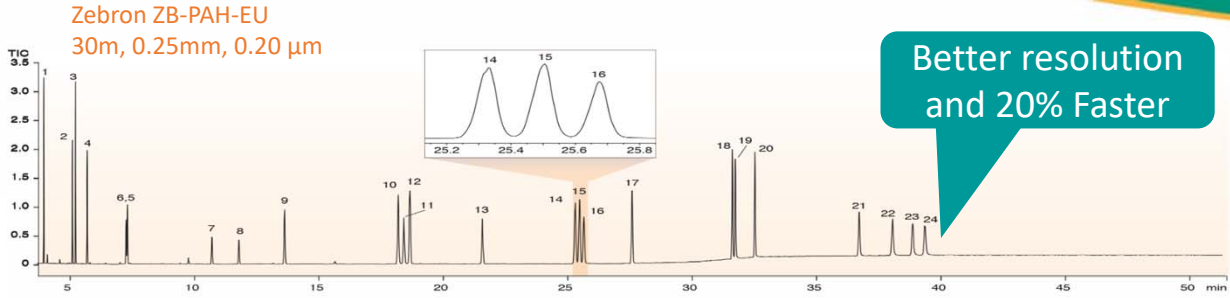
Detector: MSD, 50-500 m/z

Transfer line Temperature: 300 °C

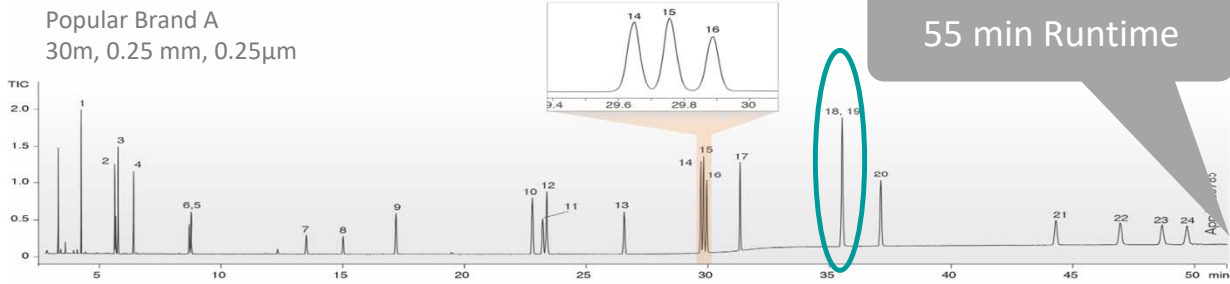
Source Temperature: 300 °C

App ID 25713

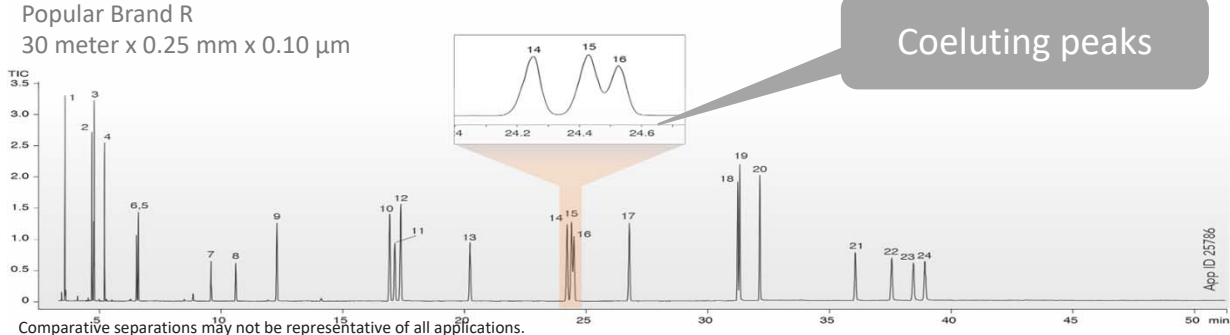
- | | | | | |
|-------------------|-----------------------|---------------------------|----------------------------|------------------------|
| 1. Naphthalene | 6. Anthracene | 11. Cyclopenta[c,d]pyrene | 16. Benzo[j]fluoranthene | 21. Dibenzo[a,l]pyrene |
| 2. Acenaphthylene | 7. Fluoranthene | 12. Chrysene | 17. Benzo[a]pyrene | 22. Dibenzo[a,e]pyrene |
| 3. Acenaphthene | 8. Pyrene | 13. 5-Methylchrysene | 18. Indeno[1,2,3-cd]pyrene | 23. Dibenzo[a,i]pyrene |
| 4. Fluorene | 9. Benzo[c]fluorene | 14. Benzo[b]fluoranthene | 19. Dibenz[a,h]anthracene | 24. Dibenzo[a,h]pyrene |
| 5. Phenanthrene | 10. Benz[a]anthracene | 15. Benzo[k]fluoranthene | 20. Benzo[g,h,i]perylene | |



Better resolution and 20% Faster



55 min Runtime



Coeluting peaks

Comparative separations may not be representative of all applications.

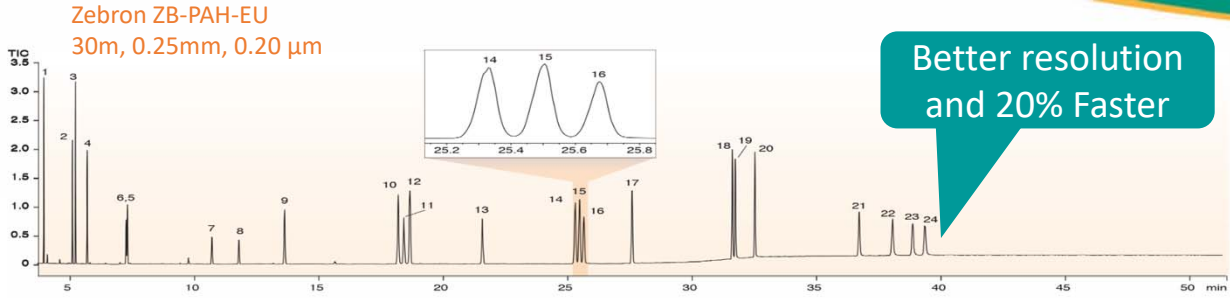
Better Combination of Resolution and Speed

GC-MS Conditions

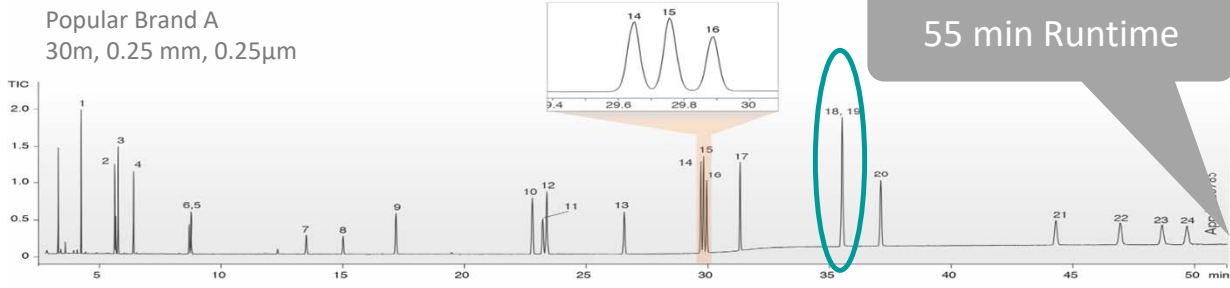
- Column:** As Indicated
- Dimension:** As indicated
- Part No.:** 7HG-G043-10 (Zebtron ZB-PAH-EU column)
- Injection:** Split 5:1 @ 330 °C, 1 μL
- Recommended Liner:** Zebtron PLUS Single Taper Z- Liner™
- Liner Part No.:** AG2-4B13-05 (for Shimadzu 2010 GC)
- Carrier Gas:** Helium @ 24 psi (constant pressure)
- Oven Program:** 45 °C for 0.8 min to 200 °C @ 45 °C/min to 226 °C @ 3 °C/min for 0 min to 320 °C @ 10 °C/min for 20 min
- Detector:** MSD, 50-500 m/z
- Transfer line Temperature:** 300 °C
- Source Temperature:** 300 °C

Sample:

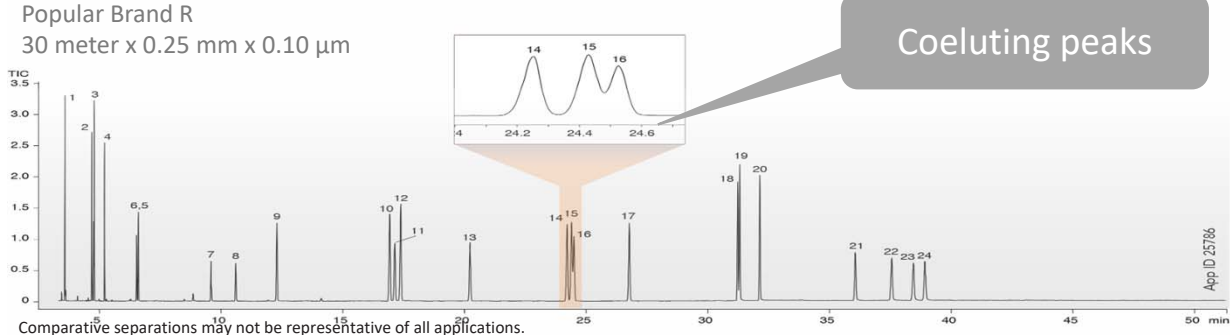
- | | |
|---------------------------|----------------------------|
| 1. Naphthalene | 13. 5-Methylchrysene |
| 2. Acenaphthylene | 14. Benzo[b]fluoranthene |
| 3. Acenaphthene | 15. Benzo[k]fluoranthene |
| 4. Fluorene | 16. Benzo[j]fluoranthene |
| 5. Phenanthrene | 17. Benzo[a]pyrene |
| 6. Anthracene | 18. Indeno[1,2,3-cd]pyrene |
| 7. Flouranthene | 19. Dibenz[a,h]anthracene |
| 8. Pyrene | 20. Benzo[g,h,i]perylene |
| 9. Benzo[c]fluorene | 21. Dibenzo[a,i]pyrene |
| 10. Benz[a]anthracene | 22. Dibenzo[a,e]pyrene |
| 11. Cyclopenta[c,d]pyrene | 23. Dibenzo[a,i]pyrene |
| 12. Chrysene | 24. Dibenzo[a,h]pyrene |



Better resolution and 20% Faster



55 min Runtime



Coeluting peaks

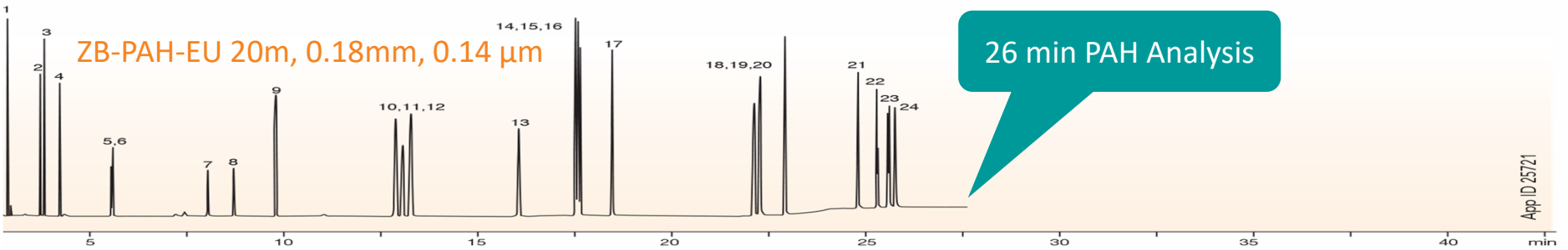
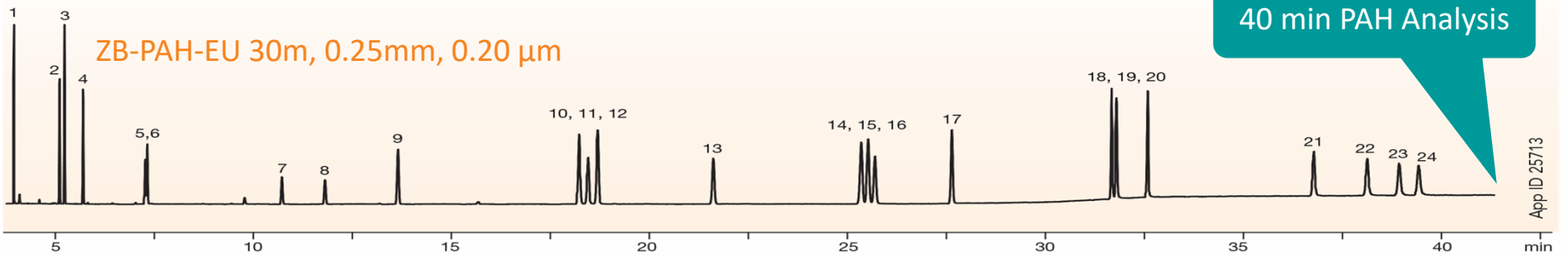
Comparative separations may not be representative of all applications.

Better Combination of Resolution and Speed

GC-MS Conditions
Column: As Indicated
Dimension: As indicated
Part No.: 7HG-G043-10 (Zebron ZB-PAH-EU column)
Injection: Split 5:1 @ 330 °C, 1 μL
Recommended Liner: Zebron PLUS Single Taper Z- Liner™
Liner Part No.: AG2-4B13-05 (for Shimadzu 2010 GC)
Carrier Gas: Helium @ 24 psi (constant pressure)
Oven Program: 45 °C for 0.8 min to 200 °C @ 45 °C/min to 226 °C @ 3 °C/min for 0 min to 320 °C @ 10 °C/min for 20 min
Detector: MSD, 50-500 m/z
Transfer line Temperature: 300 °C
Source Temperature: 300 °C

- Sample:**
- | | |
|---------------------------|----------------------------|
| 1. Naphthalene | 13. 5-Methylchrysene |
| 2. Acenaphthylene | 14. Benzo[b]fluoranthene |
| 3. Acenaphthene | 15. Benzo[k]fluoranthene |
| 4. Fluorene | 16. Benzo[j]fluoranthene |
| 5. Phenanthrene | 17. Benzo[a]pyrene |
| 6. Anthracene | 18. Indeno[1,2,3-cd]pyrene |
| 7. Flouranthene | 19. Dibenz[a,h]anthracene |
| 8. Pyrene | 20. Benzo[g,h,i]perylene |
| 9. Benzo[c]fluorene | 21. Dibenzo[a,l]pyrene |
| 10. Benz[a]anthracene | 22. Dibenzo[a,e]pyrene |
| 11. Cyclopenta[c,d]pyrene | 23. Dibenzo[a,i]pyrene |
| 12. Chrysene | 24. Dibenzo[a,h]pyrene |

Up to 70% Faster PAH Analysis

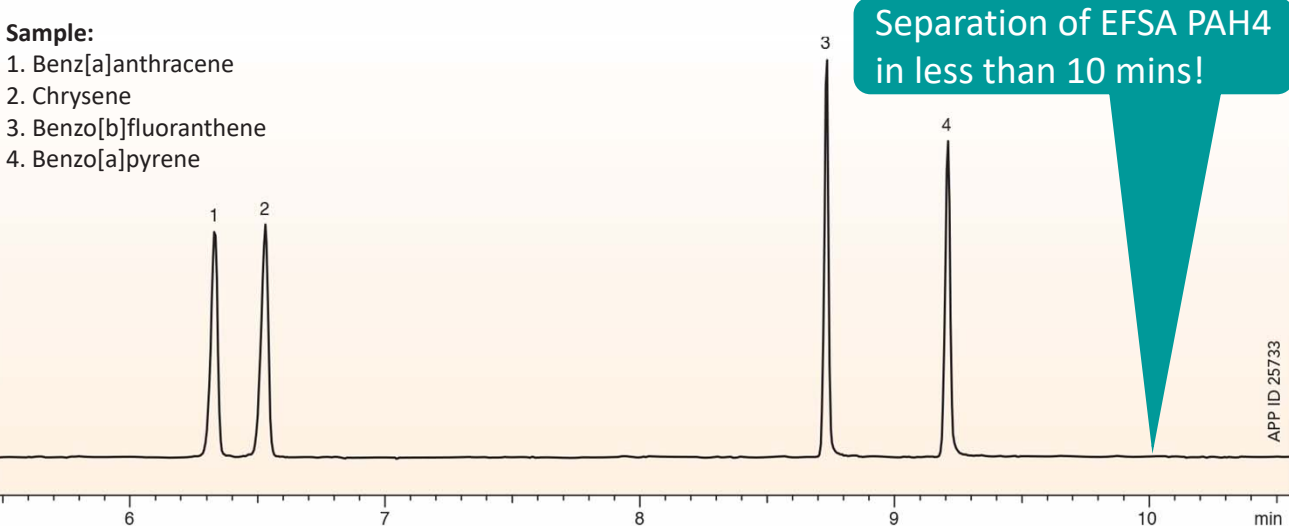




Fast & Accurate PAH Analysis in Food

Separation of EFSA PAH4
in less than 10 mins!

- Sample:**
1. Benz[a]anthracene
 2. Chrysene
 3. Benzo[b]fluoranthene
 4. Benzo[a]pyrene



GC-MS Conditions
Column: Zebron ZB-PAH-EU
Dimensions: 10 meter x 0.10 mm x 0.08 µm
Part No.: 7CB-G043-59
Recommended Liner: Zebron PLUS Single Taper Z- Liner™
Liner Part No.: AG2-4B13-05 (for Shimadzu® 2010 GC System)
Injection: Split (15:1) @ 320 °C, 1 µL
Carrier Gas: Helium @ 0.88 mL/min (constant Flow)

Oven Program: 70 °C for 0.4 min to 180 °C @ 140 °C/min to 230 °C @ 14 °C/ min for 3 min to 280 °C @ 85 °C/ min for 5 min 330 °C @ 40 °C/min for 5 min
Detector: MSD, 100-500 m/z
Transfer line Temperature: 300 °C
Source Temperature: 300 °C

Technote TN-2093

4-2093

phenomenex
Innovating with Tradition™

APPLICATIONS
Rapid GC-MS Analysis of European Food Safety Agency (EFSA) PAH Compounds in Food using a Zebron™ ZB-PAH-EU GC Column

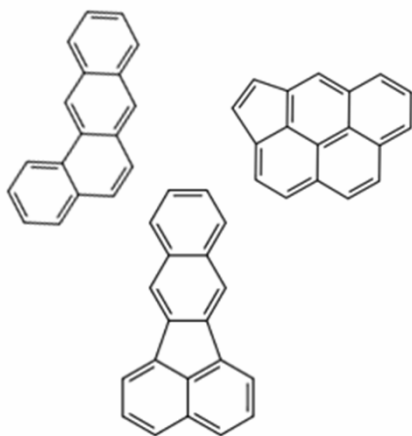
Introduction
 Polycyclic aromatic hydrocarbons (PAHs) are carcinogenic substances that must be monitored in food products per guidelines set forth by the European Food Safety Agency (EFSA) prior to distribution within the European Union. PAH compounds may arise in meat and dairy products upon heat processing, during which smoke and residue in food may react with sugars and creatine to generate PAHs. In addition, packaging materials in food may also introduce PAH compounds. The EFSA has identified four PAHs as the "EFSA PAH4," which consists of benzo[a]pyrene, benzo[b]fluoranthene, chrysene, and benzo[a]anthracene. These four PAH compounds are representative of the carcinogenic characteristic of most food samples. It is very important to quantify these 4 PAHs in food without any false positives from other interfering PAH compounds. Also, it is essential to analyze these 4 PAHs in the shortest run time to improve the throughput of the analysis. In this study, the optimal selectivity of the Zebron ZB-PAH-EU capillary GC column is utilized to separate "EFSA PAH4" compounds in a short run time of less than 10 minutes. In addition, a 10 component EU (10+1) mixture was injected to confirm that there were no interferences with the "EFSA PAH4" test compounds, ensuring accurate quantification of food samples.

Figure 1A.
 Separation of "EFSA PAH4" on a 30 m x 0.25 mm x 0.20 µm Zebron ZB-PAH-EU GC Column

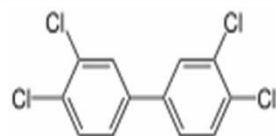
Figure 1B.
 Separation of interfering PAHs (10+1) on a 30 m x 0.25 mm x 0.20 µm Zebron ZB-PAH-EU GC Column

GC-MS Method Parameters	Sample Name	Retention Time	Sample Name	Retention Time
Column: Zebron ZB-PAH-EU	10+1	6.5	10+1	6.5
Injection: 1 µL	10+1	7.0	10+1	7.0
Carrier Gas: Helium	10+1	8.8	10+1	8.8
Flow Rate: 0.88 mL/min	10+1	9.5	10+1	9.5
Oven Program: 70 °C for 0.4 min to 180 °C @ 140 °C/min to 230 °C @ 14 °C/min for 3 min to 280 °C @ 85 °C/min for 5 min 330 °C @ 40 °C/min for 5 min	10+1	10.5	10+1	10.5
Detector: MSD, 100-500 m/z	10+1	11.5	10+1	11.5
Transfer Line Temp: 300 °C	10+1	12.5	10+1	12.5
Source Temp: 300 °C	10+1	13.5	10+1	13.5

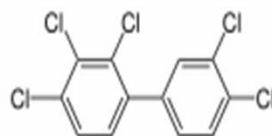
POPs Compound Classes



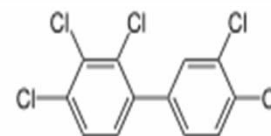
PAH



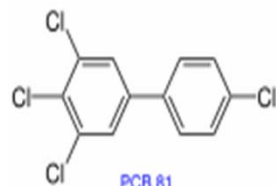
PCB 77



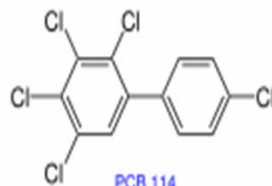
PCB 105



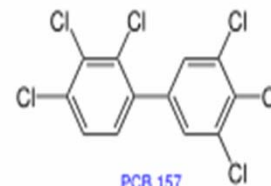
PCB 156



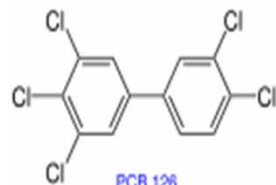
PCB 81



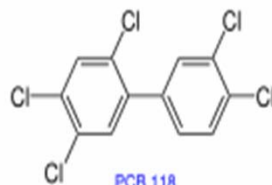
PCB 114



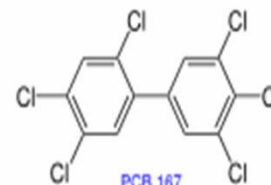
PCB 157



PCB 126

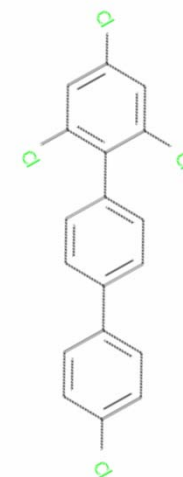


PCB 118



PCB 167

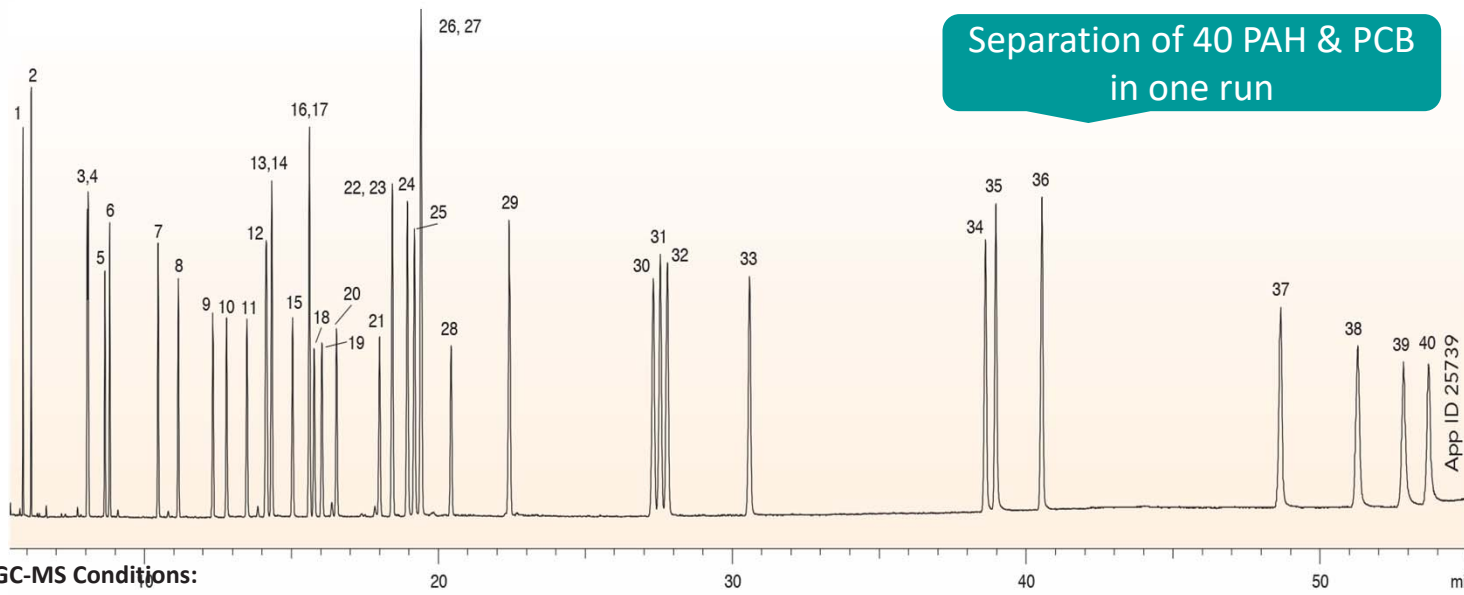
PCB



Chloroterphenyl

PAH & PCB in One Method

Separation of 40 PAH & PCB
in one run



- Sample:**
- | | |
|---------------------------|----------------------------|
| 1. TCMX | 28. PCB 170 |
| 2. DCB 22 | 29. 5-Methylchrysene |
| 3. PCB 31 | 30. Benzo[b]fluoranthene |
| 4. PCB 28 | 31. Benzo[k]fluoranthene |
| 5. PCB 69 | 32. Benzo[j]fluoranthene |
| 6. PCB 52 | 33. Benzo[a]pyrene |
| 7. PCB 70 | 34. Indeno[1,2,3-cd]pyrene |
| 8. PCB101 | 35. Dibenzo[a,h]anthracene |
| 9. PCB 81 | 36. Benzo[g,h,i]perylene |
| 10. PCB 77 | 37. Dibenzo[a,l]pyrene |
| 11. PCB 123 | 38. Dibenzo[a,e]pyrene |
| 12. PCB 153 | 39. Dibenzo[a,i]pyrene |
| 13. PCB 118 | 40. Dibenzo[a,h]pyrene |
| 14. Benzo[c]fluorene | |
| 15. PCB 105 | |
| 16. PCB 164 | |
| 17. PCB 163 | |
| 18. PCB 138 | |
| 19. PCB 126 | |
| 20. PCB 167 | |
| 21. PCB 156 | |
| 22. PCB 180 | |
| 23. PCB 157 | |
| 24. Benz[a]anthracene | |
| 25. Cyclopenta[c,d]pyrene | |
| 26. PCB 169 | |
| 27. Chrysene | |

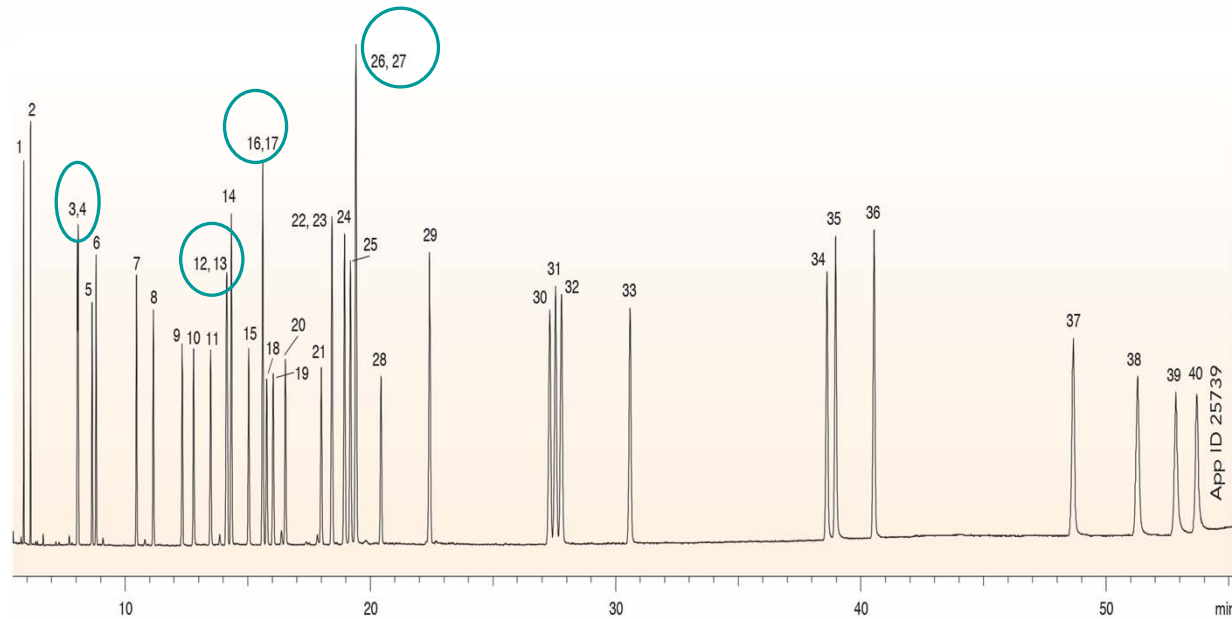
GC-MS Conditions:

Column: Zebron ZB-PAH-EU
Dimension: 30 meter x 0.25 mm x 0.20 µm
Part No.: 7HG-G043-10
Injection: Splitless for 0.5 min @ 320 °C, 1 µL
Recommended Liner: Zebron PLUS Single Taper Z- Liner™
Liner Part No.: AG2-4B13-05 (for Shimadzu 2010 GC)
Carrier Gas: Helium @ 1.3 mL/min (constant flow)

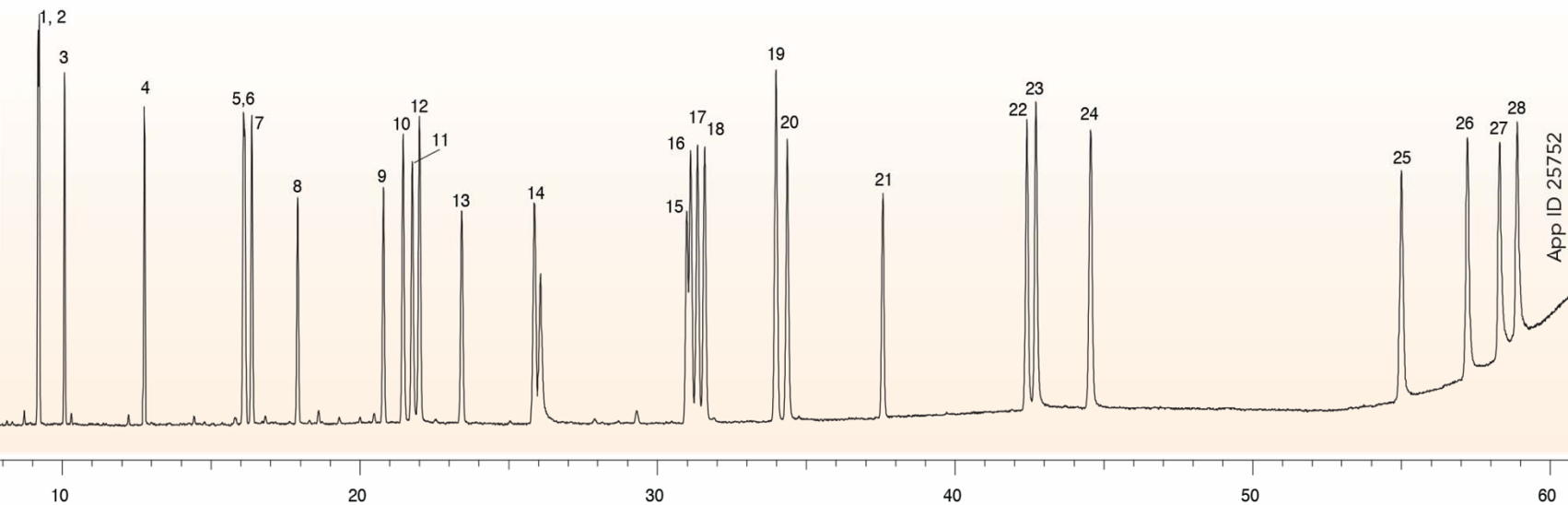
Oven Program: 45 °C for 1 min to 200 °C @ 50 °C/min to 250 °C @ 3 °C/min for 5 min to 300 °C @ 3 °C/min for 10 min to 340 °C @ 5 °C/min for 0 min
Detector: MSD, 50-500 m/z
Transfer line Temperature: 300 °C
Source Temperature: 300 °C

PAH & PCB in One Method

Peak No	Analyte	EI Ion (m/z)	EI Ion (m/z)
3	PCB31	256	186
4	PCB28	256	186
12	PCB118	326	254
13	PCB153	360	290
16	PCB163	360	290
17	PCB164	360	290
22	PCB180	394	359
23	PCB 157	360	290
26	PCB169	360	290
27	Chrysene	228	202



PAH, PCB and Terphenyl in One Method



Sample:

1. PCB 31
2. PCB 28
3. PCB-52
4. PCB 101
5. PCB 153
6. PCB118
7. Benzo[c]fluorene
8. PCB138
9. PCB180
10. Benz[a]anthracene
11. Cyclopenta[c,d]pyrene
12. Chrysene
13. Trichlorotriphenyl
14. 5-Methylchrysene
15. Tetrachloroterphenyl
16. Benzo[b]fluoranthene
17. Benzo[k]fluoranthene
18. Benzo[j]fluoranthene
19. Benzo[e]pyrene
20. Benzo[a]pyrene
21. Pentachloroterphenyl
22. Indeno[1,2,3-cd]pyrene
23. Dibenzo[a,h]anthracene
24. Benzo[g,h,i]perylene
25. Dibenzo[a,l]pyrene
26. Dibenzo[a,e]pyrene
27. Dibenzo[a,i]pyrene
28. Dibenzo[a,h]pyrene

GC-MS Conditions

Column: Zebtron ZB-PAH-EU

Dimension: 30 meter x 0.25 mm x 0.20 μ m

Part No.: 7HG-G043-10

Injection: Split 2:1 @ 320 °C, 1 μ L

Recommended Liner: Zebtron PLUS Single Taper Z-Liner™

Liner Part No.: AG2-4B13-05 (for Shimadzu 2010 GC)

Carrier Gas: Helium @ 72.8 kPa (constant pressure)

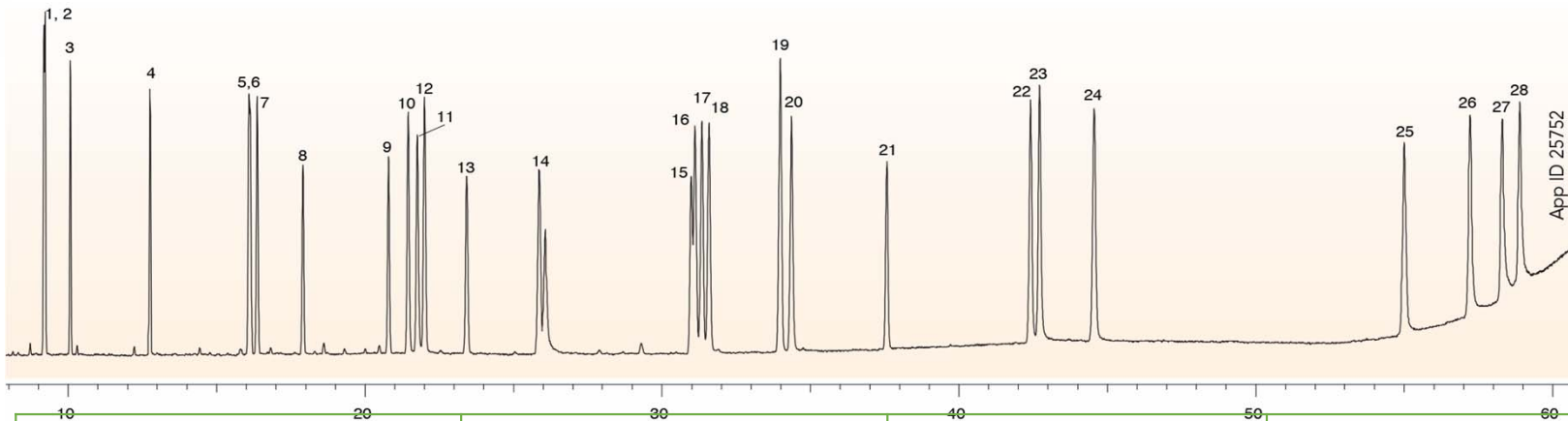
Oven Program: 45 °C for 1 min to 200 °C @ 50 °C/min to 250 °C @ 3 °C/min for 5 min to 300 °C @ 3 °C/min for 10 min to 340 °C @ 5 °C/min for 0 min

Detector: MSD, 100-500 m/z

Transfer line Temperature: 300 °C

Source Temperature: 300 °C

PAH, PCB and Terphenyl in One Method



Sample:

- 1. PCB 31
- 2. PCB 28
- 3. PCB-52
- 4. PCB 101
- 5. PCB 153
- 6. PCB118
- 7. Benzo[c]fluorene
- 8. PCB138
- 9. PCB180
- 10. Benz[a]anthracene
- 11. Cyclopenta[c,d]pyrene
- 12. Chrysene
- 13. Trichlorotriphenyl
- 14. 5-Methylchrysene
- 15. Tetrachloroterphenyl
- 16. Benzo[b]fluoranthene
- 17. Benzo[k]fluoranthene
- 18. Benzo[j]fluoranthene
- 19. Benzo[e]pyrene
- 20. Benzo[a]pyrene
- 21. Pentachloroterphenyl
- 22. Indeno[1,2,3-cd]pyrene
- 23. Dibenzo[a,h]anthracene
- 24. Benzo[g,h,i]perylene
- 25. Dibenzo[a,l]pyrene
- 26. Dibenzo[a,e]pyrene
- 27. Dibenzo[a,i]pyrene
- 28. Dibenzo[a,h]pyrene

Peak	Analyte	El Ion (m/z)	El Ion (m/z)
1	PCB31	256	186
2	PCB28	256	186
5	PCB118	326	254
6	PCB153	360	290
15	Tetrachloroterphenyl	368	296
16	Benzo[b]fluoranthene	252	224



Unleash the Power of Fast GC PAH Analysis

ZB-PAH-EU

- Up to 70% Faster PAH Analysis
- Elevated Temperature Stability

- **ZB-PAH-CT**

- Enhanced Resolution for **Chrysene** and **Triphenylene**
- Increased Benzo[b,k]fluoranthene Separation

Factors Influencing Resolution

Master Resolution Equation

$$R_s = \frac{\sqrt{N}}{4} \cdot \frac{\alpha - 1}{\alpha} \cdot \frac{k}{1 + k}$$

Efficiency Selectivity Retention

N = theoretical plates

α = k_2/k_1

k = $(t_R - t_o)/t_o$

ZB-PAH-CT

Excellent Resolution of Chrysene and Triphenylene

Column: Zebron ZB-PAH-CT
40 meter x 0.18 mm x 0.14 µm

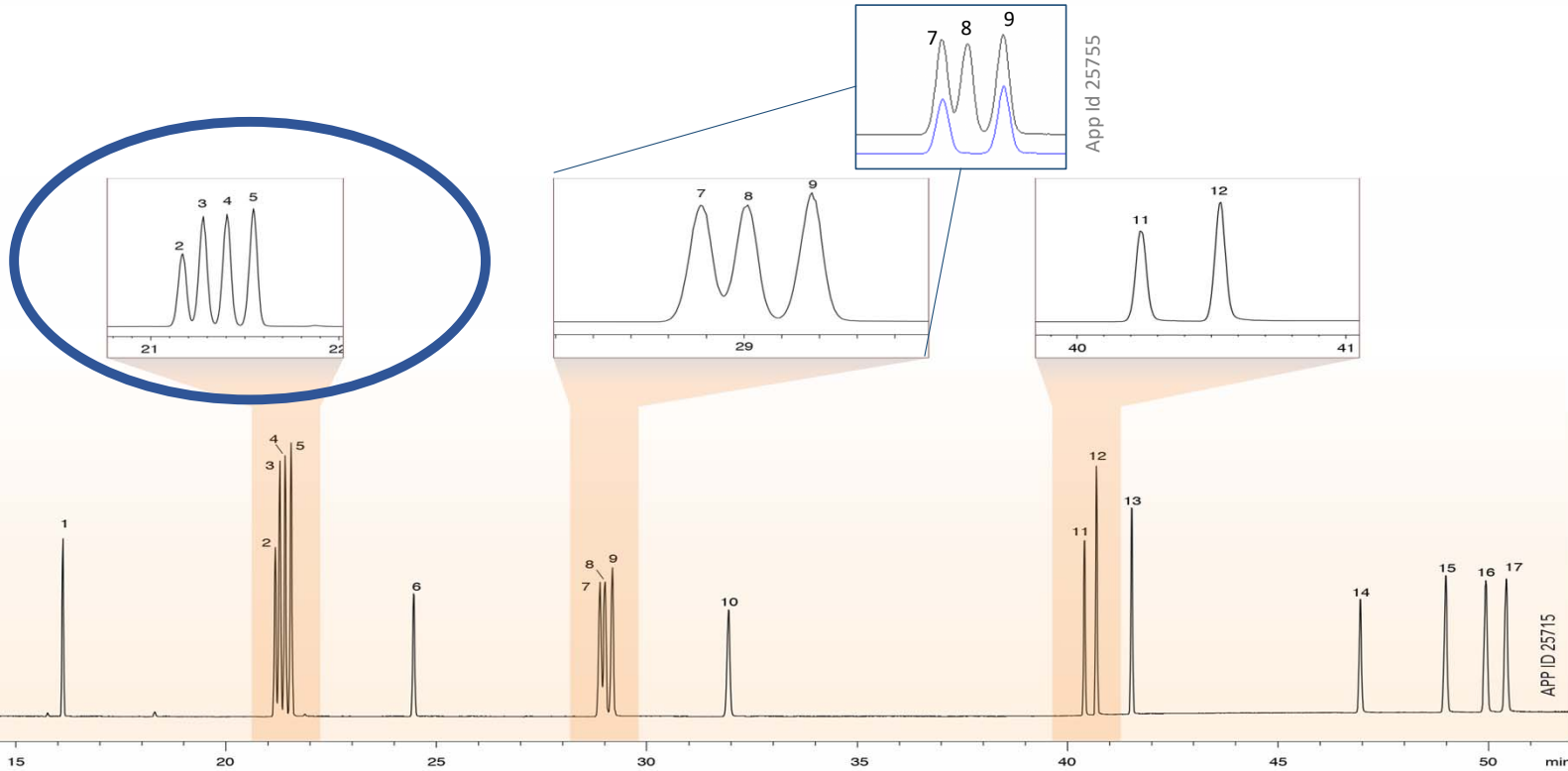
Sample:

1. Benzo[c]fluorene
2. Cyclopenta[c,d]pyrene
3. Benz[a]anthracene

4. Triphenylene

5. Chrysene

6. 5-Methylchrysene
7. Benzo[b]fluoranthene
8. Benzo[j]fluoranthene
9. Benzo[k]fluoranthene
10. Benzo[a]pyrene
11. Indeno[1,2,3-c,d]pyrene
12. Dibenzo[a,h]anthracene
13. Benzo[g,h,i]perylene
14. Dibenzo[a,l]perene
15. Dibenzo[a,e]perene
16. Dibenzo[a,i]perene
17. Dibenzo[a,h]perene



Great resolution of Chrysene and Triphenylene

ZB-PAH CT: Shorter Run Time & Better Sensitivity

Zebron ZB-PAH-CT
30 meter x 0.25 mm x 0.20 μm

Better Sensitivity for later eluters

APP ID 25753

Popular Brand A
30 meter x 0.25 mm x 0.15 μm

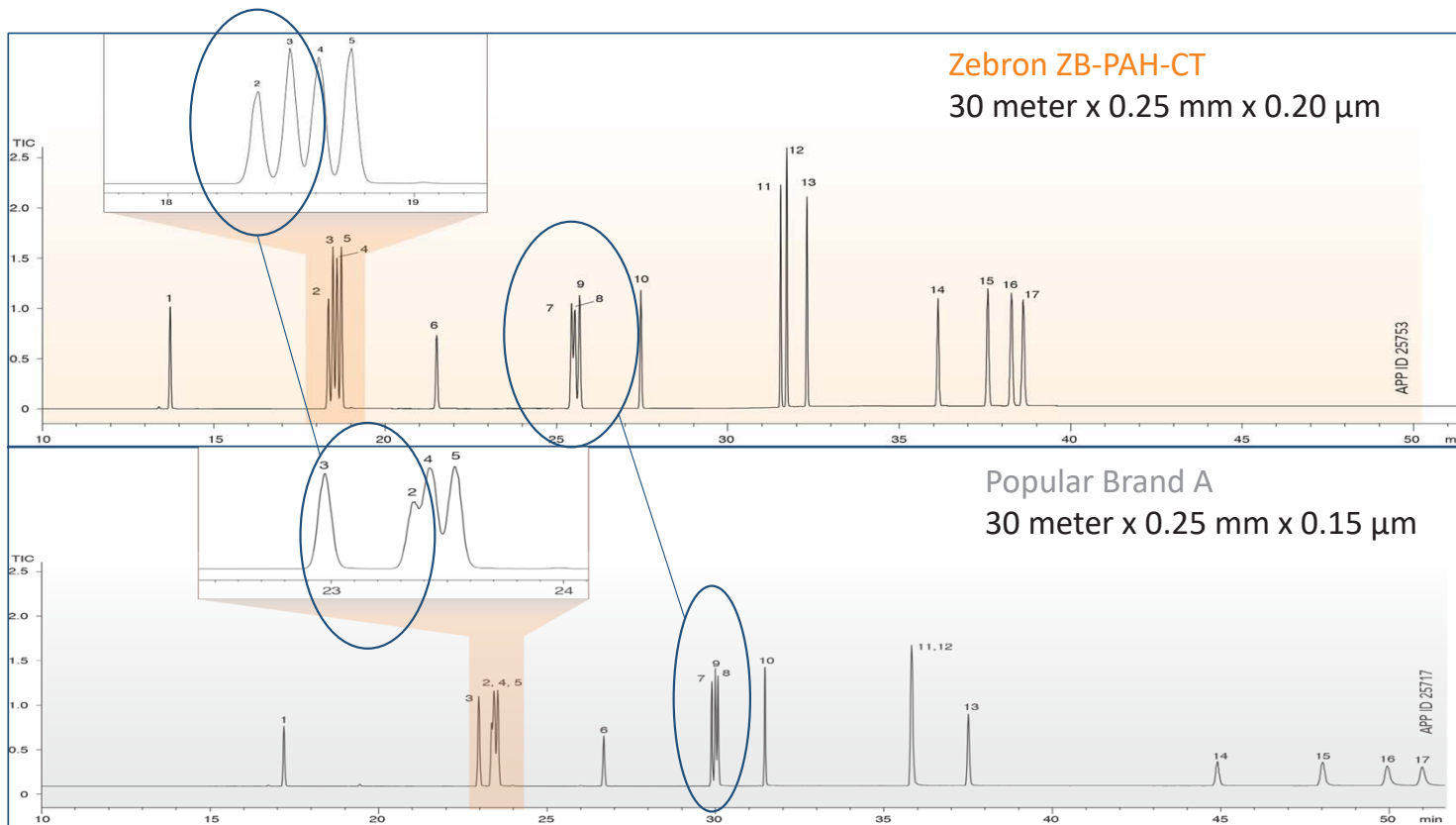
27% Faster Analysis!

APP ID 25717

Sample:

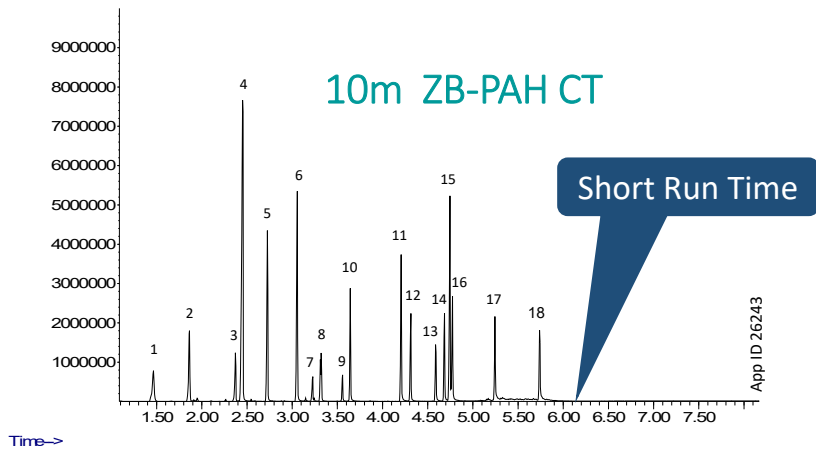
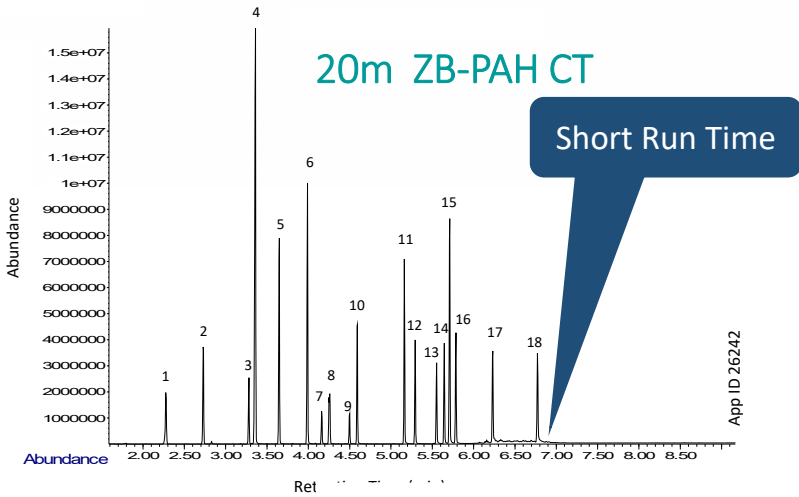
1. Benzo[c]fluorene
2. Cyclopenta[c,d]pyrene
3. Benz[a]anthracene
4. Triphenylene
5. Chrysene
6. 5-Methylchrysene
7. Benzo[b]fluoranthene
8. Benzo[j]fluoranthene
9. Benzo[k]fluoranthene
10. Benzo[a]pyrene
11. Indeno[1,2,3-c,d]pyrene
12. Dibenzo[a,h]anthracene
13. Benzo[g,h,i]perylene
14. Dibenzo[a,l]perene
15. Dibenzo[a,e]perene
16. Dibenzo[a,i]perene
17. Dibenzo[a,h] perene

ZB-PAH CT: Notice Selectivity Change



Sample:

1. Benzo[c]fluorene
2. Cyclopenta[c,d]pyrene
3. Benzo[a]anthracene
4. Triphenylene
5. Chrysene
6. 5-Methylchrysene
7. Benzo[b]fluoranthene
8. Benzo[j]fluoranthene
9. Benzo[k]fluoranthene
10. Benzo[a]pyrene
11. Indeno[1,2,3-c,d]pyrene
12. Dibenzo[a,h]anthracene
13. Benzo[g,h,i]perylene
14. Dibenzo[a,l]perene
15. Dibenzo[a,e]perene
16. Dibenzo[a,i]perene
17. Dibenzo[a,h] perene



Separation of Phthalate on ZB-PAH CT

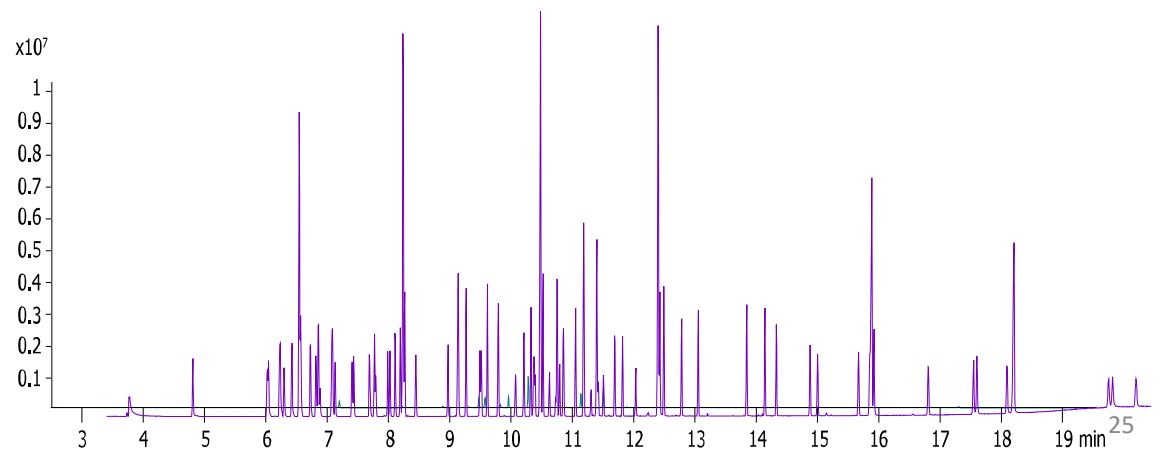
#	Analyte	Average RT(min)	%RSD 20m column		Average RT (min)	%RSD 10m Column	
		20m Column	RT	Peak Area	10m column	RT	Peak Area
1	Dimethyl phthalate	2.279	0.02	1.31	1.466	0.02	1.51
2	Diethyl phthalate	2.731	0.02	1.08	1.864	0.02	1.23
3	Diallyl phthalate	3.282	0.02	1.21	2.375	0.02	0.83
4	Dipropyl phthalate	3.361	0.02	9.57	2.454	0.02	0.72
5	Diisobutyl phthalate	3.649	0	0.7	2.729	0.02	1.51
6	Dibutyl phthalate	3.991	0	0.69	3.058	0.02	1.23
7	bis(2-Methoxyethyl)phthalate	4.164	0.01	0.53	3.229	0.02	8.41
8	bis(4-Methyl-2-pentyl)phthalate	4.261	0.01	0.98	3.325	0.02	0.72
9	bis(2-Ethoxyethyl)phthalate	4.501	0.01	1.28	3.559	0.01	3.46
10	Dipentyl phthalate	4.594	0.01	0.67	3.646	0.02	1.22
11	Diethyl phthalate	5.164	0.01	0.72	4.208	0.01	0.97
12	Butylbenzyl phthalate	5.295	0.01	0.48	4.313	0.01	2.42
13	bis(2-Butoxyethyl)phthalate	5.554	0.02	1.29	4.592	0.02	3.41
14	Di(ethylhexyl) phthalate	5.646	0.03	0.5	4.687	0.01	0.94
15	Diheptyl phthalate	5.711	0.04	0.19	4.747	0.01	1.1
16	Dicyclohexyl phthalate	5.787	0.05	0.47	4.776	0.01	0.6
17	Di-n-octyl phthalate	6.232	0.09	0.57	5.246	0.02	0.84
18	Dinonyl phthalate	6.775	0.11	1.26	5.737	0.04	0.73

EPA-8270 on ZB-PAH CT

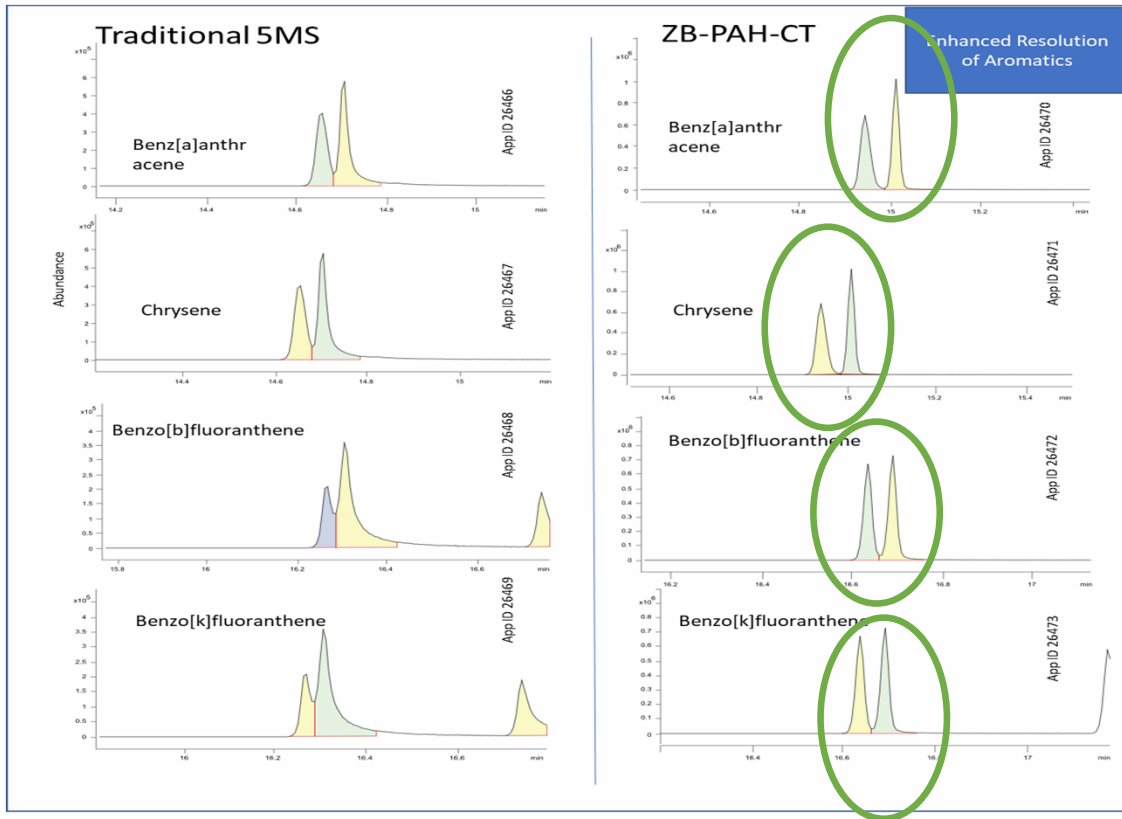
Peak	Analyte Name	RT (min)	Sim Ions (m/z)	Concentration (mg/L)
1	N-Nitrosodimethylamine(NDMA)	2.858	74, 43	8.5558
2	Pyridine	3.896	79,52	10.4750
3	2-Fluorophenol (SSTD)	3.896	111,92, 64	15.1345
4	Phenol-d5 (SSTD)	5.113	99, 71, 42	18.4146
5	Phenol (CC)	5.132	94,66	18.3206
6	Aniline	5.311	93,66	22.6076
7	2-Chlorophenol	5.323	128,64, 130	15.4539
8	bis (2-chloroethyl) ether	5.385	92,63,95	14.3546
9	1,3-Dichlorobenzene	5.515	146, 148, 110	18.6464
10	1,4-Dichlorobenzene (CC)	5.657	146, 148, 110	18.9806
11	1,2-Dichlorobenzene	5.818	146, 148, 111	17.9633
12	Benzyl alcohol	5.904	108, 79, 51	8.6580
13	2-Methylphenol	5.941	107, 108, 79	12.7840
14	Bis (2-chloroisopropyl) ether	5.947	45, 121	9.9582
15	3 and 4-Methylphenols	6.164	107, 108	15.3823
16	Hexachloroethane	6.176	200, 116, 165	6.8428
17	N-Nitroso-di-n-propylamine (NDPA) (SP)	6.219	70, 43,130	11.2333
18	Nitrobenzene-d5 (SSTD)	6.497	82, 54, 128	16.0045
19	Nitrobenzene	6.522	77,51, 123	16.0799
20	Isophorone	6.775	82, 138, 54	28.7534
21	2,4-Dimethylphenol	6.862	122, 107, 121	12.9483
22	Benzoic acid	6.862	122, 105,77	ND
23	2-Nitrophenol (CC)	6.88	139, 81, 109	7.8679
24	bis (2-Chloroethoxy) methane	7.078	93, 95, 123	16.9629
25	2,4-Dichlorophenol (CC)	7.115	162, 163, 97	12.7863
26	1,2,4-Trichlorobenzene	7.195	179, 181, 144	15.5531
27	Hexachlorobutadiene (CC)	7.282	224,226, 222	3.7682
28	Naphthalene	7.356	128,129,126	19.4055
29	4-Chloroaniline	7.535	127,129, 65	7.2401
30	4-Chloro-3-methylphenol (CC)	8.06	107,142,144	4.9281

Peak	Analyte Name	RT (min)	Sim Ions (m/z)	Concentration (mg/L)
31	Hexachlorocyclopentadiene (SP)	8.215	236,234,271	3.6914
32	2-Methylnaphthalene	8.227	142,141,115	13.5397
33	1-Methylnaphthalene	8.357	142,141,115	12.7486
34	2,4,6-Trichlorophenol (CC)	8.579	195,197,199	3.3466
35	2,4,5-Trichlorophenol	8.604	195,198,97	3.5454
36	2-Fluorobiphenyl (SSTD)	8.703	172,171,170	14.7471
37	2-Chloronaphthalene	8.882	162,127,164	12.1502
38	o-Nitroaniline	9.16	65,138,92	2.7961
39	Dimethyl phthalate	9.302	163,77,194	13.3250
40	Acenaphthylene	9.413	152,151,153	17.7443
41	2,6-Dinitrotoluene	9.469	165,63,89	2.8922

- Meets Tuning requirement for EPA 8270
- Over 40 different compounds
- Pesticides, Aromatics, Phenols, Amines, PAH



EPA-8270 on ZB-PAH CT



Enhanced Resolution of Aromatic Compounds

Summary

Polycyclic Aromatic Hydrocarbons

- PAH Terminologies & Regulations
- Challenges with PAH Analysis

ZB-PAH-EU

- Complete resolution of EU15+1 and EPA 610 PAHs
- Speed up your PAH Analysis
- PAH in Food
- One Column for PAH & PCB

ZB-PAH-CT

- Unique Selectivity for Chrysene & Triphenylene
- Short Run Time & better Sensitivity
- Phthalates in Food
- EPA-8270 Method Resolution Improvement

Thank You



Terms and Conditions

Subject to Phenomenex Standard Terms and Conditions, which may be viewed at www.phenomenex.com/TermsAndConditions.

Trademarks

Zebron, Z-Liner, Engineered Self Cross-linking (ESC), and BE-HAPPY are trademarks of Phenomenex. Shimadzu is a registered trademark of Shimadzu Corporation. AccuStandard is a registered trademark of AccuStandard, Inc.

Disclaimer

Comparative separations may not be representative of all applications.

Phenomenex is not affiliated with Shimadzu or AccuStandard.

FOR RESEARCH USE ONLY. Not for use in clinical diagnostic procedures.
© 2020 Phenomenex, Inc. All rights reserved.